

QCLOUDCOSTING: ONGOING LESSONS IN PROJECT MANAGING A CONSTRUCTION COST MANAGEMENT APPLICATION PACKAGE.

A PRESENTATION BY: DR. OLUSOLA OGUNSINA

FOR THE 2023 ANNUAL ASSEMBLY OF REGISTERED QUANTITY SURVEYORS

ON FEBRUARY 1ST AND 2ND

AT

**THE NATIONAL CENTER FOR WOMEN DEVELOPMENT, TAFAWA BELEWA WAY CENTRAL
BUSINESS DISTRICT ABUJA.**

INTRODUCTION

- ❑ **PROJECT MANAGEMENT IS THE TRANSFORMATION OF VISION INTO REALITY**
- ❑ **OUR VISION WAS TO BUILD AN AFFORDABLE SOCIO-DIGITAL INFRASTRUCTURE FOR CREATING CONSTRUCTION COST INFORMATION**
- ❑ **THE SOCIO-DIGITAL INFRASTRUCTURE IS CONCEIVED AS A SUITE OF APPLICATIONS THAT ALLOWS THE QS TO QUANTIFY BOQ ITEMS FROM DRAWINGS; COLLECTS PRICING INFORMATION FOR MATERIALS, EQUIPMENT AND LABOUR FROM DIGITAL MARKET PLACES; AND BUILD UNIT PRICES FOR CONSTRUCTION ITEMS USING SITE-BASED ESTIMATING ALGORITHMS.**



PROBLEM

BuildCosting™



- DRIVEN BY THE AGILE FRAMEWORK, WE RELEASED OUR FIRST COMMERCIAL PRODUCT IN FEBRUARY 2020 TO AN AUGUST ASSEMBLY OF QUANTITY SURVEYORS**
- WE ARE GRATEFUL TO THE MALLAM MURITALA ALIYU-LED BOARD FOR THE OPPORTUNITIES WE HAVE HAD OVER THESE THREE YEARS TO ENGAGE THE QUANTITY SURVEYING COMMUNITY OF PRACTICE IN NIGERIA ON THE PLATFORM OF QSRBN.**
- WE ARE ALSO GRATEFUL TO SENIOR COLLEAGUES IN ACADEMICS AND MANY PRACTITIONERS WHO HAVE GIVEN US FEEDBACK IN THEIR COURSE OF USING THE SOFTWARE.**
- BEFORE SHARING THE LESSONS LEARNED IN THE COURSE OF THIS PROJECT, LET US REVIEW THE FEATURES OF THE SOFTWARE**

THE FEATURES OF THE SOFTWARE

- A STANDARD LIBRARY OF DESCRIPTIONS BASED ON NIQS BESMM4R
- ONSCREEN MEASUREMENT CAPABILITY GIVEN PDF AND JPEG DRAWINGS.
- GENERATION OF BILLS IN BOTH ELEMENTAL AND TRADE PACKAGES.
- PRINT-READY PDF BOQS
- IMPORTATION TO EXCEL (CURRENTLY UNDERGOING DEBUGGING AND TESTING)

qCloudCosting™

A STANDARD LIBRARY OF DESCRIPTIONS BASED ON NIQS BESMM4R



MM Library Explorer
Navigate, Search & Find



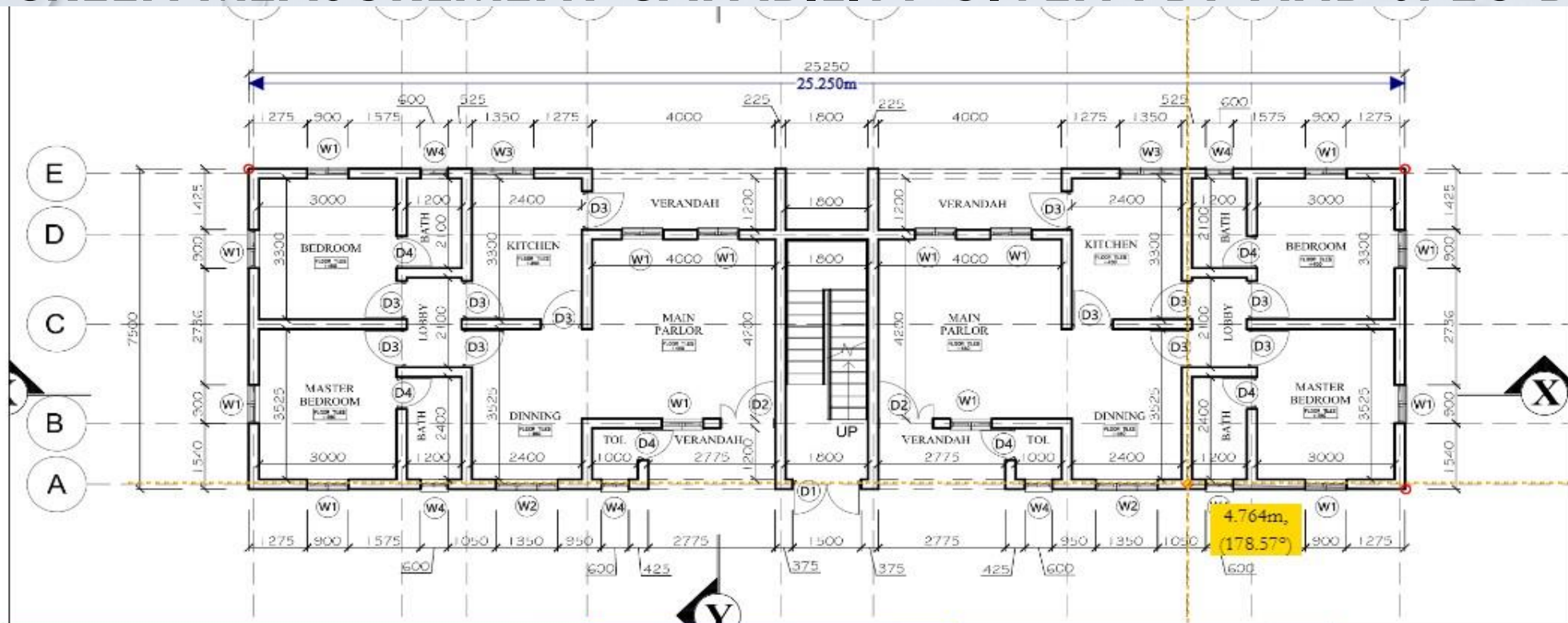
SUBSTRUCTURE (Provisional)

55 items found

- ▶ PRELIMINARIES
- ▶ DEMOLITION AND ALTERATION
- ▶ **SUBSTRUCTURE (Provisional)**
- ▶ FRAME
- ▶ UPPER FLOOR
- ▶ ROOF
- ▶ STAIRS AND RAMPS
- ▶ EXTERNAL WALLS
- ▶ WINDOWS AND EXTERNAL DOORS
- ▶ INTERNAL WALLS AND PARTITIONS
- ▶ INTERNAL DOORS
- ▶ WALL FINISHES
- ▶ FLOOR FINISHES
- ▶ CEILING FINISHES
- ▶ FITTINGS, FURNISHINGS AND EQUIPMENT
- ▶ SANITARY INSTALLATIONS
- ▶ DISPOSAL INSTALLATIONS
- ▶ WATER INSTALLATIONS
- ▶ SPACE HEATING AND AIR CONDITIONING
- ▶ ELECTRICAL INSTALLATIONS
- ▶ FIRE AND LIGHTING PROTECTION

- Nr.** SUBSTRUCTURE (Provisional) » [Sub Element] » EXCAVATING AND FILLING » REMOVING TREES » Cut down trees; grub up roots a...
Trees, girth 500-1500mm. +
- Nr.** SUBSTRUCTURE (Provisional) » [Sub Element] » EXCAVATING AND FILLING » REMOVING TREES » Cut down trees; grub up roots a...
Trees, girth 1500-3000mm. +
- Nr.** SUBSTRUCTURE (Provisional) » [Sub Element] » EXCAVATING AND FILLING » REMOVING TREES » Cut down trees; grub up roots a...
Trees, girth exceeding 3000mm but not exceeding 4500mm. +
- Nr.** SUBSTRUCTURE (Provisional) » [Sub Element] » EXCAVATING AND FILLING » REMOVING TREE STUMPS » Remove tree stumps, g...
Tree stump, girth 500-1500mm. +
- Nr.** SUBSTRUCTURE (Provisional) » [Sub Element] » EXCAVATING AND FILLING » REMOVING TREE STUMPS » Remove tree stumps, g...
Tree stump, girth 1500-3000mm. +
- Nr.** SUBSTRUCTURE (Provisional) » [Sub Element] » EXCAVATING AND FILLING » REMOVING TREE STUMPS » Remove tree stumps, g...
Tree stump, girth exceeding 3000mm but not exceeding 4500mm. +
- m²** SUBSTRUCTURE (Provisional) » [Sub Element] » EXCAVATING AND FILLING » SITE CLEARANCE » Clear site of all:
Vegetation and undergrowths and dispose off site. +
- m²** SUBSTRUCTURE (Provisional) » [Sub Element] » EXCAVATING AND FILLING » SITE PREPARATION » Excavate :
Topsoil for disposal, average 150mm deep. +
- m³** SUBSTRUCTURE (Provisional) » [Sub Element] » EXCAVATING AND FILLING » SITE PREPARATION » [Preamble]
Retain topsoil on site in temporary spoil heaps. +
- m³** SUBSTRUCTURE (Provisional) » STANDARD FOUNDATIONS » EXCAVATING AND FILLING » EXCAVATION » Excavate :
Trenches for foundation, maximum depth not exceeding 2.00m commencing at 0.30m below ground level. +

ONSCREEN MEASUREMENT CAPABILITY GIVEN PDF AND JPEG DRAWINGS



when necessary.

6. This drawing is copyright and must not be reproduced without the written permission of EDIACON NIGERIA LTD

Project Name and Address
A PROPOSED BUILDING DEVELOPMENT IN KUKURU LANA, OBUKWA VILLAGE, AMANSEA, AWKA NORTH LOCAL GOVT. ANAMBRA STATE.

Client:
EZEANYA PASCAL

Copyright

Code	Description/Specification	Quantity	Unit	Rate	Amount
1.5.4.1.1.0	Vegetation and undergrowths and dispose off site. <small>SUBSTRUCTURE (Provisional) GROUNDWORKS</small>	283.00	m ²	0.00	0.00
2.1.5.5.2.0.0	Topsoil for disposal, average 150mm deep. <small>SUBSTRUCTURE (Provisional) GROUNDWORKS</small>	206.00	m ²	0.00	0.00
3.1.5.6.2.1.0.A	Trenches for foundation, maximum depth not exceeding 2.00m commencing at stripped level including levelling and compacting and antitermite [Dieldrex 20, Gamalin 20, or Solignum plus kerosine (1:2)] treatment to surfaces of trench excavation. <small>SUBSTRUCTURE (Provisional) GROUNDWORKS</small>	54.00	m ³	0.00	0.00
4.1.5.6.1.1.0.C	Pit for column bases, maximum depth not exceeding 2.00m, commencing at	59.00	m ³	0.00	0.00
Totals					0.00

Project has 19 BoQ item(s) » Selected item has 1 member(s)

PRINT-READY PDF BOQS



Catalog of payments items (COPI)

Elements based COPI (for project: (Imported @2023-01-31T22.08.19.644) PARLIAMENTARY HOUSING PROJECT: BLOCK OF 3-STOREY 2-BEDROOM FLAT BUILDING AT KARASANA ...

REPORTS ▾



Project Team Members

Pg 1 of Element Nr 1 - SUBSTRUCTURE (Provisional)

CODE/ ITEM REF	DESCRIPTION/SPECIFICATION	QTY.	UNIT	RATE	AMOUNT
	<u>ELEMENT NR 1</u>				
	<u>SUBSTRUCTURE (Provisional)</u>				
	<u>EXCAVATING AND FILLING</u>				
	<u>SITE CLEARANCE</u>				
	<u>Clear site of all:</u>				
1.5.4.1.1.0	Vegetation and undergrowths and dispose off site.	1,098.00	m ²	200.00	219,600.00
	<u>SITE PREPARATION</u>				
	<u>Excavate :</u>				
1.5.5.2.0.0	Topsoil for disposal, average 150mm deep.	1,098.00	m ²	200.00	219,600.00
	<u>STANDARD FOUNDATIONS</u>				
	<u>EXCAVATING AND FILLING</u>				
	<u>EXCAVATION</u>				
	<u>Excavate :</u>				
1.5.6.2.1.0A	Trenches for foundation, maximum depth not exceeding 2.00m commencing at stripped level.	208.00	m ³	800.00	166,400.00
1.5.6.1.1.0C	Pit for column bases, maximum depth not exceeding 2.00m, commencing at stripped level.	130.00	m ³	800.00	104,000.00
	<u>DISPOSAL</u>				
	<u>Disposal of excavated material</u>				
1.5.9.2.1.0	Reuse surplus excavated materials for filling to make	143.00	m ³	500.00	71,500.00

THREE LESSONS AND THEIR APPLICATIONS TO THE QS PROFESSION

- ❑ THE BIGGER THE MARKET, THE MORE THE CHANCES OF SUCCESS.
- ❑ “WHO” IS SUPERIOR TO “WHAT”.
- ❑ FUNDING MAKES FOCUS EASIER.

qCloudCosting™

CURRENT STRATEGIC DIRECTIONS

OUR ONGOING SALES ARE NOT ENOUGH TO SUSTAIN THE FULL DEVELOPMENT OF THE SUITES OF APPLICATION CONCEIVED. WE ARE RAISING FUNDS TO ENABLE US ENGAGE FULL TIME HANDS FOR THE PROJECT. SPECIFICALLY WE ARE :

- WE ARE NOW OFFERING THE SOFTWARE TO ACADEMIC INSTITUTIONS FREELY IN EXCHANGE OF DONATIONS FROM THEM AND THEIR BENEFACTORS TO ENABLE US CONTINUE THE DEVELOPMENTAL EFFORTS.**
- WE ARE DISCOUNTING HEAVILY DURING THIS ASSEMBLY TO ENABLE COLLEAGUES OBTAIN THE SOFTWARE.**
- WE ARE NOW CUSTOMIZING THE SOLUTIONS FURTHER TO SUIT THE PECULIAR NEEDS OF PRACTICING FIRMS. IF YOU ARE INTERESTED IN DEPLOYING TECHNOLOGY IN IMPROVING THE OPERATIONS OF YOUR FIRM LET US TALK.**
- WE ARE EXPLORING PARTNERSHIPS AND INVESTMENT FUNDINGS TO PULL OUT THE REST OF THE PROJECT.**

CONCLUSION

OUR VISION OF BUILDING A SUITE OF APPLICATIONS IS ALIVE, WE WILL CONTINUE TO EXPLORE WAYS TO BRING IT TO REALITY. YOUR PATRONAGE IS CRUCIAL TO ACTUALIZING THAT VISION. SO WE INVITE YOU TO JOIN US. GET A LIFETIME LICENSE TO QCLOUDCOSTING BEFORE YOU LEAVE ABUJA.

qCloudCosting™